



### System Components for Integrators

The **dynAXIS Galvanometer Scanners** from SCANLAB are high-dynamic rotary motors for precise optical applications. They are based on moving-magnet technology and a high-precision position detector, enabling fast and precisely controlled laser beam deflection – reliable in continuous industrial use.

Axially pre-loaded precision ball bearings ensure play-free rotor guidance with high stiffness and low friction, while the optimized

rotor design provides outstanding dynamics and favorable natural frequency behavior.

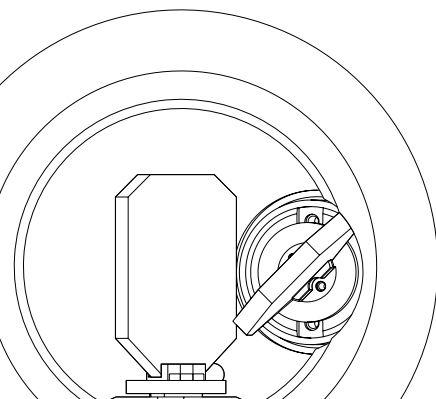
Integrated heating and temperature sensors (excluding dynAXIS XS and dynAXIS T) allow active temperature control, enhancing long-term stability under varying environmental conditions. Comprehensive testing on specialized test stands continuously ensures the highest quality.

#### Key Features

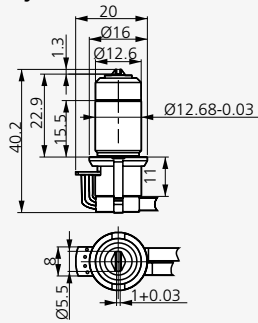
- High-dynamic and precise mirror positioning for accurate laser beam deflection
- Optimized rotor and bearing design for maximum dynamics and durability
- High-resolution position detector for precise control

#### Additional Benefits

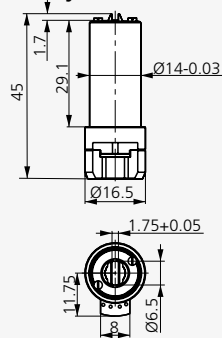
- Designed for long-term and continuous industrial use
- Compatible with all common laser wavelengths and power ranges



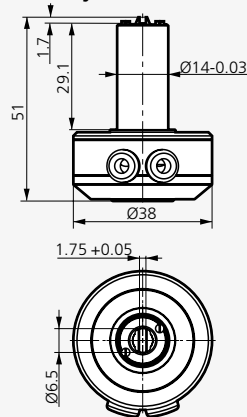
**dynAXIS XS**



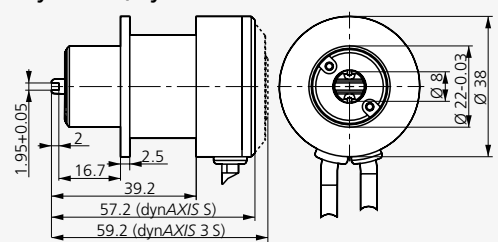
**dynAXIS T**



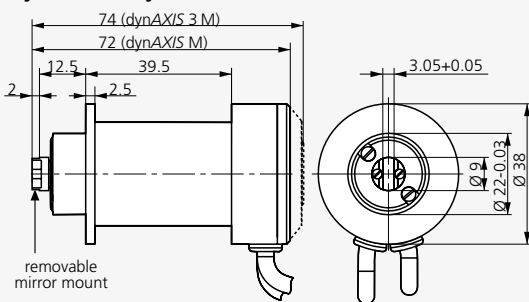
**dynAXIS 3 T**



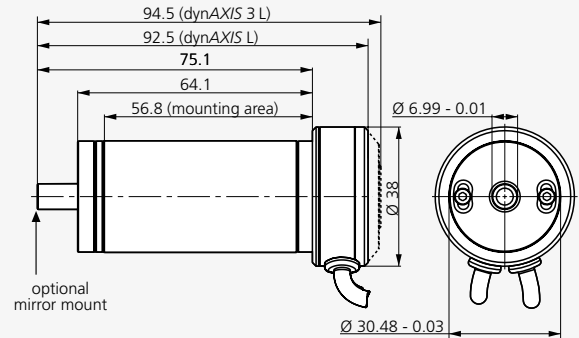
**dynAXIS S, dynAXIS 3 S**



**dynAXIS M, dynAXIS 3 M**



**dynAXIS L, dynAXIS 3 L**



all dimensions in mm

## Mounting

A rotation-symmetric flange facilitates mounting of the galvanometer scanner. When mounting, ensure that the galvanometer housing is electrically insulated from the machine assembly. Mirror stoppers are already integrated in the scanners.

Mirrors are directly bonded to the galvanometer's shaft. The mirrors of the dynAXIS M and dynAXIS L are attached via a mirror mount to the shaft.