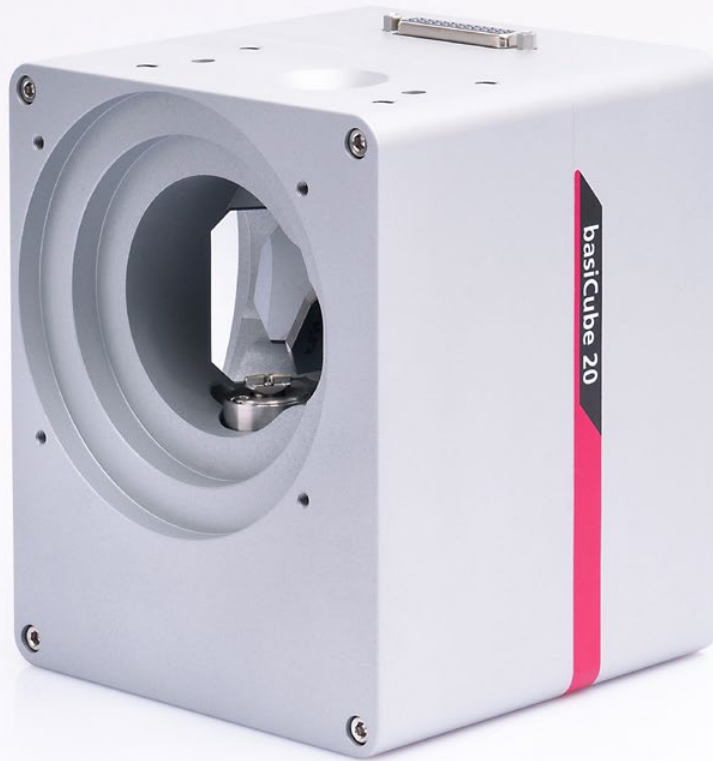


NEW



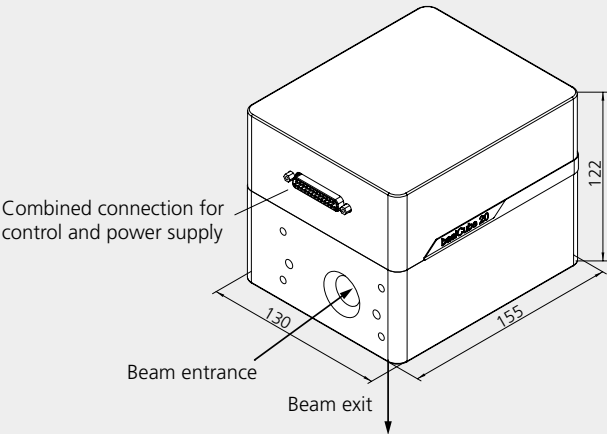
basiCube 20: First Class Performance, Economy Price

Our entry-level scan head is now available with 20 mm aperture

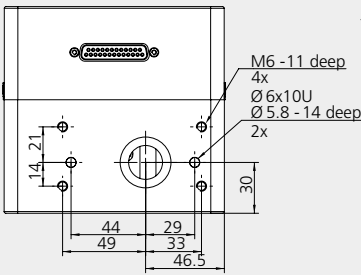
- Ultra compact size
- Excellent price–performance ratio
- Engineered and manufactured in Germany

Technical Drawings

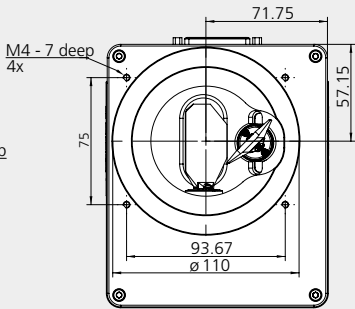
Layout and connections



Beam entrance side



Beam exit side



Preliminary Specifications

Dynamics

Tuning	Vector
Tracking error [ms]	0.25
Maximum speed	
[rad/s]	50
[m/s] ⁽¹⁾	8

Precision & Stability

Repeatability (RMS) [μrad]	< 2
Positioning resolution [bit] ⁽²⁾	20
Nonlinearity [mrad] ⁽³⁾	< 0.9
Temperature drift	
Offset [μrad/K]	< 30
Gain [ppm/K]	< 160
Long-term drift	
8-h-drift (after 30 min warm-up) ⁽⁴⁾	
Offset [μrad]	< 100
Gain [ppm]	< 250

Further Specifications

Optical performance	
Typical scan angle [rad]	± 0.35
Gain error [mrad]	< 5
Zero offset [mrad]	< 5
Power requirements (RMS)	available variants: 24 V DC, 30 V DC; max. 2.6 A each
Interfaces	SL2-100 or XY2-100
Weight [kg]	3.7

⁽¹⁾ with F-Theta objective, f = 160 mm

⁽²⁾ only together with SL2-100 interface

⁽³⁾ related to 0.77 rad

⁽⁴⁾ at constant ambient temperature and load
(all angles are in optical degrees)